

# SECURITON

## Heat Detection

### SEC-ADW-535

# Technical Catalogue

Version 2.0 2019



The SEC-ADW-535 is an integrated line type heat detector with a response behaviour based on heat differential and/or maximum heat. Thanks to its self-check feature and the periodic automatic test, the SEC-ADW-535 is particularly suitable for use in applications where the legally prescribed functional and maintenance checks cannot be performed due to the given ambient conditions or only with difficulty.

**Line Type Heat Detector**

- SEC-ADW-535-1 one sensing tube
- SEC-ADW-535-2 two sensing tubes



SEC-ADW-535-1

The SecuriSens SEC-ADW-535 line-type heat detector combines a proven functional principle with the latest developments in sensor and processor technology.

A sensing tube filled with normal air is installed in the area to be monitored. A fully electronic pressure sensor permanently records the pressure in the sensing tube and compares it with the alarm criteria.

Commissioning and configuration is done either directly on the device or via the comfortable ADW Config software tool for a perfect adaptation to existing environmental conditions. For planning the ADW HeatCalc software allows an optimized design of any installation.



SEC-ADW-535-2

*Technical data*

Operating voltage:	9 to 30 VDC
Length of sensing tube:	115 m
Relay contact:	50 VDC/1A (UL 30 VDC)
Operating temperature evaluation unit:	-30°C to +70°C
Operating temperature sensing tube*:	-40 °C to +180 °C
Dimensions (HxWxD):	160.5 x 250.5 x 134 mm
Protection class of case:	IP65
Case Color:	Light grey (RAL 280 70 05) Charcoal (RAL 300 20 05)
Weight (1 / 2 sensing tube):	1.5 kg / 1.97 kg
Standards:	EN 54-22 Class A1I, A2I, BI ... GI UL, FM
VdS-Approval:	G 214076
ActivFire Approved:	AFP-3328

\*: Lower or higher temperature ranges are also possible subject to consultation with the manufacturer

**Line Type Heat Detector ATEX**

- SEC-ADW-535-1HDx one sensing tube
- SEC-ADW-535-2HDx two sensing tubes



SEC-ADW-535-1HDx

The SecuriSens SEC-ADW-535 line-type heat detector combines a proven functional principle with the latest developments in sensor and processor technology.

A sensing tube filled with normal air is installed in the area to be monitored. A fully electronic pressure sensor permanently records the pressure in the sensing tube and compares it with the alarm criteria.

Commissioning and configuration is done either directly on the device or via the comfortable ADW Config software tool for a perfect adaptation to existing environmental conditions. For planning the ADW HeatCalc software allows an optimized design of any installation.



SEC-ADW-535-2HDx

The HDx versions of the control unit are for installation inside Ex zones 2 and 22 and very harsh ambient conditions.

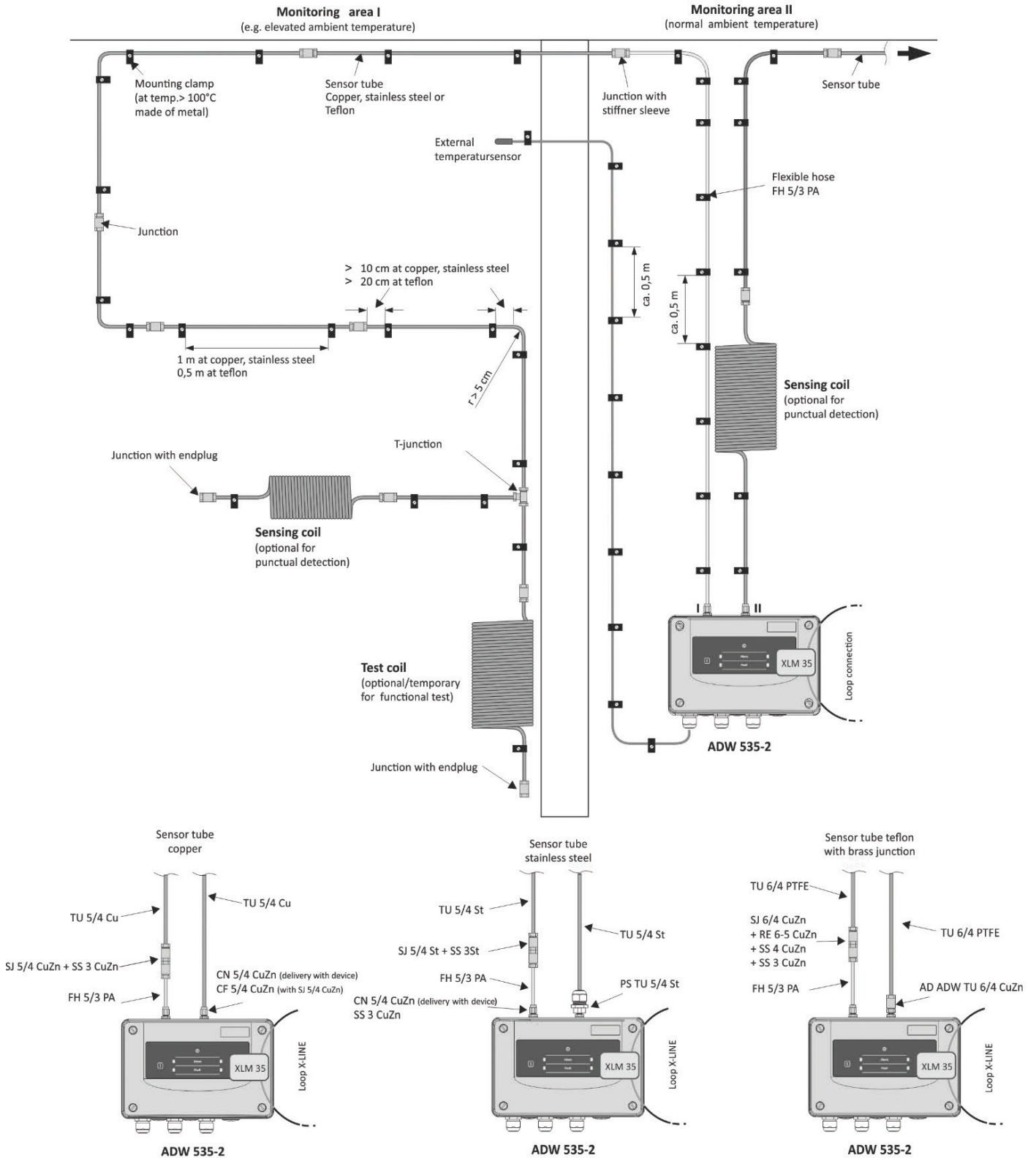
*Technical data*

Operating voltage:	9 to 30 VDC
Length of sensing tube:	115 m (NFPA 72 200 m)
Relay contact:	50 VDC/1A (UL 30 VDC)
Operating temperature evaluation unit:	-30°C to +70°C
Operating temperature sensor tube*:	-40°C to +180°C
Dimensions (HxWxD):	260 x 160 x 134 mm
Protection class of case:	IP66
Case Color:	graphite black (RAL 9011) platinum grey (RAL 7036)
Weight:	
ADW 535-1HDx	3,05 kg
ADW 535-2HDx	3,42 kg
Standards:	EN 54-22 Class A1I, A2I, BI ... GI UL, FM
VdS-Approval:	G 214076
ATEX-Approval:	Ex II 3G Ex nA nC IIC T4 Gc II 3D Ex tc IIIC T135°C Dc
ActivFire Approved:	AFP-3328

\*: Lower or higher temperature ranges are also possible subject to consultation with the manufacturer

## Overview of the linear heat detector SEC-ADW-535

The illustrated components are examples





**Line Type Heat Detector ATEX Zone 1**

**SEC-ADW-535-1-ATEX**

Line-type heat detector with one sensor for the use in explosive atmosphere of the zone 1. (Category 2G) according to directive 94/9/EG (ATEX 100a).

Approval according to EN 54-22, heat sensor response class A1I, A2I, BI ... GI

- Max. monitoring area = 800 m<sup>2</sup>
- Max. sensor tube length per connection channel =115 m (Copper and stainless steel sensor tube)
- Max. sensor tube length per connection channel =105 m (Teflon sensor tube)
- One stub line per sensor tube possible
- Service PC interface (Ethernet)
- Surface-mounted housing



*Technical data*

Operating voltage:	9 to 30 VDC
Power consumption quiescent:	35 mA at 24 VDC
Operating temperature evaluation unit:	-20°C to +40°C
Operating temperature sensor tube:	-40°C to +800°C
Dimensions (HxWxD):	679 x 325 x 190 mm
Protection class of case:	IP65
Case Color:	umbra grey (RAL 7022) pebble grey (RAL 7032)
Weight:	27 kg
Type of protection:	II G 2 Ex d e IIC T6
ATEX-Approval:	
Case:	PTB 99 ATEX 1057
Detonation guard:	IBExU 06 ATEX 2003 X

**External Temperature Sensor**

**SEC-ART-535-10**

For the temperature compensation the external temperature sensor SEC-ART-535 is to be used and placed in the monitored area. For temperature ranges and for EX applications a special version is to be used. (SC-ART-535-30 Ex 400°C)



*Technical data*

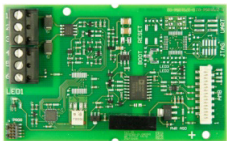
Temperature range:	- 50°C to 200°C
Length cable:	10 m

**Loop I/F module for Special Fire Detectors**

**SEC-XLM-35**

With the installation of an SEC-XLM-35, special fire detectors like ADWs can be ideally connected via the addressable loop to the SecuriFire fire alarm systems. The normative alarm transmission to the superordinate FACP is then accomplished via the SEC-XLM-35. The module comes with mounting brackets, screws and ribbon cable.

The XLM 35 module allows also central configuration of special fire detectors with the Config Over Line function.



*Technical data*

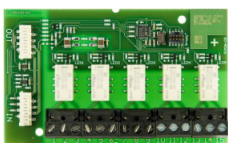
Operating Voltage from AMB 35:	5 VDC
Maximum power consumption :	20 mA
Dimensions (HxWxD):	95 x 58 x 17 mm
Weight:	62 g

**Relay I/F module for Special Fire Detectors**

**SEC-RIM-36**

The SEC-RIM-36 brings five (5) additional relay outputs to your Special Fire Detector.

Expansion limit is two (2) SEC-RIM 36 / 10 relays. Each relay can be assigned to any ADW event by programming with the ADW Config software. The module comes with mounting brackets, screws and ribbon cable.



*Technical data*

Max. relay output load:	50 / 1 / 30 VDC/AW
Dimensions (HxWxD):	95 x 58 x 17mm
Weight:	85 g

**Serial I/F Module networking of Special Fire Detectors**

**SEC-SIM-35**

For the RS 485 networking of up to 250 Special Fire Detectors like SEC-ADW-535.

Using the "ADW Config" configuration software, all ADWs in the network can be visualised and configured from a PC. The module comes with mounting brackets, screws and ribbon cables.



*Technical data*

Dimensions (HxWxD):	95 x 58 x 17 mm
Weight:	56 g

**Serial Master Module for networking of Special Fire Detectors**

**SEC-SMM-535**

This interface connects the RS485 (over SEC-SIM-35) networked ADWs to a USB port of a PC. It is powered by the USB port.

*Technical data*

Power Supply:	USB powered / 5 VDC
Operating temperature:	-30°C to +60°C
Dimensions (HxWxD):	82 x 89 x 55 mm
Weight:	165 g





	Copper tube	Stainless steel tube	Teflon tube	Flexible polyamide hose
<b>Application areas</b>	Standard environments	High temperature environments	Standard and aggressive environments	For the flexible connection between ADW and copper/stainless steel tube
<b>Properties</b>	Temperature resistance ++ Chemical resistance -- Corrosion resistance +	Temperature resistance +++ Chemical resistance -- Corrosion resistance ++	Temperature resistance ++ Chemical resistance +++ Corrosion resistance +++	Temperature resistance ++ Chemical resistance ++ Corrosion resistance ++
<b>Application areas</b>	standard industrial applications Car park halls Loading platforms Road tunnels railway tunnels underground railway tunnels	Fertiliser industry Rubber industry Plastics processing industry Food processing industry Textile industry cellulose industry	Standard industrial applications Bioengineering Chemical industry Semiconductor industry Laboratory Engineering Medical engineering Pharmaceutical industry	As supply line to the detection area or for the thermal decoupling
<b>Diameter outside (mm)</b>	5	5	6	5
<b>Diameter inside (mm)</b>	4	4	4	3
<b>Tube length (depending on application)</b>	10 to 115 m (200 m not acc. EN)	10 to 115 m (200 m not acc. EN)	10 to 105 m (150 m not acc. EN)	0 to 20 m
<b>Max. distance between pipe clamps</b>	0,8 m to 1,2 m	0,8 m to 1,2 m	0,5 m	0,5 m
<b>Distance between pipe clamps and Screw-junction piece</b>	≥ 10 cm each side	≥ 10 cm each side	≥ 20 cm each side	≥ 20 cm each side
<b>Operating temperature</b>	-40°C to +180°C	-40°C to +300°C (higher temperatures on demand)	-40°C to + 260°C (PVDF -40 to +150°C)	-40°C to +100°C
<b>Applicable in heat classes</b>	A1-G	A1-G	A1, A2 and C	A1-G
<b>Material</b>	Cu-DHP R250	Stainless steel (1.4571)	Polytetrafluorethylen (PTFE)	Polyamide PA 12
<b>Screw junction piece</b>	Brass	Stainless steel (1.4571)	PVDF or Brass	-
<b>End plug</b>	Brass	Stainless steel (1.4571)	PVDF or Brass	-
<b>Stiffener sleeve</b>	-	-	Brass when used with Brass-junctions	Brass or Stainless steel (1.4571)
<b>Test coil</b>	Cu-DHP R250	Stainless steel (1.4571)	-	-
<b>Pipe clamp</b>	Polyamide (max. 85°C) Polypropylen (max. 100°C) or Brass	Polyamide (max. 85°C) Polypropylen (max. 100°C) or Stainless steel (1.4571)	Polyamide (max. 85°C) Polypropylen (max. 100°C) Brass or Stainless steel (1.4571)	Polyamide (max. 85°C) Polypropylen (max. 100°C)
<b>Sensing tube connection ADW (standard delivery brass)</b>	Brass	Brass (First part of tube Polyamide)	Brass; special adapter available AD ADW TU 6/4	Brass
<b>Necessary accessories</b>				
<b>Connection set</b>	-	-	1	-
<b>Screw-junction piece</b>	- Same number as pipes - Per test coil +2 (If test coil connected at ADW +1)	- Same number as pipes - Per test coil +2 (If test coil connected at ADW +1)	- Same number as hoses -1	-1 per hose (If test coil connected at ADW +1)
<b>End plug</b>	1 per sensing tube	1 per sensing tube	1 per sensing tube	-
<b>Stiffener sleeve</b>	-	-	2 per tube part (only for brass junctions)	2 per hose part
<b>Pipe clamps</b>	Ca. 1 clamp per m depending on clamp distance (0.8-1.2m)	1,25 clamps per m depending on clamp distance (0.8-1.2m)	2 clamps per m	Ca. 1 clamp per m depending on clamp distance (0.8-1.2m)

## Software

ADW HeatCalc	Type	Art.Nr.
ADW calculation & planning tool, Configuration and test software. Download from the Storebox / Partnerdata.	ADW-HeatCalc	11-1300005-01-01
Dongle for Securiton Applications (without license)	Type	Art.Nr.
Dongle for Securiton Applications (without license)	ULM-DP	VE100450
ADW Dongle (User Level, Limited access rights)	Type	Art.Nr.
ADW Config Basic License	LIC ADW	VE100418
ADW Config Programming full access (only in combination with Basic License ADW available)	LIC ADW Prog	VE100419
ADW Config Networking to configure and visualize	LIC ADW Net	VE100420

Standard sensing tube for applications with normal operating temperatures.  
 -40°C– +180°C (When used at 85°C and above, use metallic pipe clamps).



**Sensing tube copper 5/4mm**

**SEC-TU 5-4 Cu**  
 Tube to create the sensor part (straight piece 5.5m)

<i>Technical data</i>	
Diameter outside:	5 mm
Diameter inside:	4 mm
Length:	5,5 m
Material:	copper



**Sensing tube copper 5/4mm**

**SEC-TU 5-4 Cu 50**  
 Tube to create the sensor part, 1 pcs. (coil 50m)

<i>Technical data</i>	
Diameter outside:	5 mm
Diameter inside:	4 mm
Length:	50 m
Material:	copper



**Sensing tube copper 5/4mm**

**SEC-SJ 5-4 CuZn**  
 Screw junction straight for SEC-TU 5/4 Cu

<i>Technical data</i>	
For pipe diameter:	5 mm
Material:	brass
Packaging unit:	10 pieces



**Sensing tube copper 5/4mm**

**SEC-EP 5-4 CuZn**  
 End plug for SEC-SJ 5/4 CuZn

<i>Technical data</i>	
Material:	brass
Packaging unit:	5 pieces



**T-Junction for SEC-TU 5/4 Cu**

**SEC-TJ 5-4 CuZn**  
 T-Junction for SEC-TU 5/4 Cu

<i>Technical data</i>	
Material:	brass



**Sensing-Coil of SEC-TU 5/4 Cu 5 m**

**SEC-SC 5-4 Cu 5**  
 Sensing coil of SEC-TU 5/4 Cu

<i>Technical data</i>	
Length:	5 m
Material:	copper



**Test-Coil of SEC-TU 5/4 Cu 10 m**

**SEC-TC 5-4 Cu 10**  
 Test coil of SEC-TU 5/4 Cu

<i>Technical data</i>	
Length:	10 m
Material:	copper

Sensor tube for applications in corrosive environments and in the food industry for hygienic reasons.  
 -40 – +300°C (when used at 85°C and above, use metal pipe clamps).



### Sensing tube stainless steel 5/4mm

**SEC-TU 5-4 St**

Tube to create the sensor part (straight piece 6m)

#### Technical data

Diameter outside:	5 mm
Diameter inside:	4 mm
Length:	3 m
Material:	stainless steel



### Screw Junction straight for SEC-TU 5/4 St

**SEC-SJ 5-4 St**

Screw junction straight for SEC-TU 5/4 St

#### Technical data

For pipe diameter:	5 mm
Material:	stainless steel



### End plug for SEC-SJ 5/4 St

**SEC-EP 5-4 St**

End plug for SEC-SJ 5/4 St

#### Technical data

Material:	stainless steel
-----------	-----------------



### T-Junction for SEC-TU 5/4 St

**SEC-TJ 5-4 St**

T-Junction for SEC-TU 5/4 St

#### Technical data

Material:	stainless steel
-----------	-----------------



### Protection screw

**SEC-PS TU 5-4 St**

Protection screw for the direct connection of sensing tube SEC-TU 5/4 St to the SEC-ADW-535 evaluation unit.



### Sensing-Coil of SEC-TU 5/4 St

**SEC-SC 5-4 St 5**

Sensing coil of SEC-TU 5/4 St

#### Technical data

Length:	5 m
Material:	stainless steel



### Test-Coil of SEC-TU 5/4 St

**SEC-TC 5-4 St 10**

Test coil of SEC-TU 5/4 St

#### Technical data

Length:	10 m
Material:	stainless steel



Sensor tube for standard applications and for very corrosive and aggressive environments.  
 -40 – +200°C (when used at more than 85°C, metal pipe clamps and brass screw-junction pieces must be used; if more than 130 C the screw-junction pieces must be outside of the monitored area).  
 When using Teflon sensing tubes, only classes A1I to B1 are possible according to EN 54-22.



**Sensing tube teflon 6/4mm**

**SEC-TU 6-4 PTFE 50**

Tube to create the sensor part.  
 (reel 50m). When used together with metal junctions, an according stiffener sleeve is necessary.

*Technical data*

Diameter outside:	6 mm
Diameter inside:	4 mm
Length:	50 m
Material:	teflon



**Sensing tube teflon 6/4mm**

**SEC-TU 6-4 PTFE 100**

Tube to create the sensor part.  
 (reel 100m). When used together with metal junctions, an according stiffener sleeve is necessary.

*Technical data*

Diameter outside:	6 mm
Diameter inside:	4 mm
Length:	100 m
Material:	teflon



**Adapter SEC-ADW-TU 6/4 CuZn**

**SEC-AD ADW TU 6-4 CuZn**

For the connection of a Teflon sensor tube with the ADW detection unit.  
 Including 1 stiffener sleeve SS 4 CuZn.

*Technical data*

Material:	brass
-----------	-------



**Stiffener sleeve for SEC-TU 6/4 PTFE**

**SEC-SS 4 CuZn**

Stiffener sleeve for TU 6/4 PTFE

*Technical data*

Material:	brass
-----------	-------



**Screw junction straight PVDF for SEC-TU 6/4 PTFE**

**SEC-SJ 6-4 PVDF**

Screw junction straight PVDF for SEC- TU 6/4 PTFE

*Technical data*

For pipe diameter:	6 mm
--------------------	------



**End plug PVDF for SEC-SJ 6/4 PVDF**

**SEC-EP 6-4 PVDF**

End plug for SEC-SJ 6/4 PVDF.  
 SEC-SJ 6/4 PVDF is not included and has to be ordered separate.

*Technical data*

Material:	polyvinylidene fluoride
-----------	-------------------------



### T-Junction PVDF for SEC-TU 6/4 PTFE

**SEC-TJ 6-4 PVDF**

T-Junction for SEC-TU 6/4 PTFE

*Technical data*

Material: polyvinylidene fluoride



### Reduction compression ferrule for SEC-SJ 6/4 CuZn, SEC-FH 5/3 PA

**SEC-RE 6-5 CuZn**

Reduction compression ferrule for SEC-FH 5/3 PA. To be used together with SEC-SJ 6/4 CuZn or SEC-TJ 6/4 CuZn.

*Technical data*

Material: brass



### Adapter-Set PA-Teflon (incl. SJ 6/4 CuZn, SS4 CuZn, SS3 CuZn)

**SEC-AD 5-6 CuZn-Set**

Adapter set to connect the flexible hose SEC-FH 5/3 PA 25 from the ADW with the teflon sensing tube.

Set includes: SJ 6/4 CuZn, SS4 CuZn, SS3 CuZn

*Technical data*

Material: brass



### T-Junction-Set Teflontube (incl. TJ 6/4 CuZn, SS4 CuZn)

**SEC-TJ 6-4 CuZn-Set**

T-Junction set to connect 3 teflon tubes together.

Set includes: TJ 6/4 CuZn, 3x SS4 CuZn

*Technical data*

Material: brass



### Screw junction-Set Teflontube (incl. SJ 6/4 CuZn, SS4 CuZn)

**SEC-SJ 6-4 CuZn-Set**

Screw junction set to connect 2 teflon tubes together.

Set includes: SJ 6/4 CuZn, 2x SS4 CuZn

*Technical data*

Material: brass



### End plug-Set Teflontube (incl. SJ 6/4 CuZn, EP 6/4 CuZn, SS4 CuZn)

**SEC-TS 6-4 CuZn-Set**

End plug set to close the end of the Teflontube.

Set includes: SJ 6/4 CuZn, EP 6/4 CuZn, SS4 CuZn

*Technical data*

Material: brass



### Sensing-Coil 6/4PTFE with mounting clip

**SEC-SC 6-4 PTFE 5 Set**

For installation in sensing tubes for the monitoring of critical sources (facility or object monitoring) or for easy installation of at least 10 m sensor tubes in small rooms. Mounting material for the sensing coil is included (material polyamide) Support anchor, plate and bracket.

*Technical data*

Length: 5 m

Material: teflon



**Flexible Hose Polyamide 5/3mm**

**SEC-FH 5-3 PA 25**

Flexible Hose to connect the ADW detection unit with the sensor part (Cu, St, PTFE) of the sensing tube. (reel 25m). To be used together with stiffener sleeve SEC-SS 3 CuZn or SEC-SS 3 St.

*Technical data*

Diameter outside:	5 mm
Diameter inside:	3 mm
Length:	25 m
Material:	polyamide



**Stiffener sleeve brass for FH 5/3 PA**

**SEC-SS 3 CuZn**

Stiffener sleeve for SEC-FH 5-3 PA

*Technical data*

Material:	brass
Packaging unit:	10 pieces



**Stiffener sleeve stainless steel for FH 5/3 PA**

**SEC-SS 3 St**

Stiffener sleeve for FH 5/3 PA

*Technical data*

Material:	stainless steel
-----------	-----------------

**INSTALLATION MATERIAL**



**Pipe clamp**

**SEC-PC 5-6 PA**

To mount the sensing tube.

*Technical data*

For pipe diameter:	5 mm
Temperature range:	-40 to +85°C
Material:	polyamide
Packaging unit:	100 pieces



**Pipe clamp**

**SEC-PC 5-6 St**

To mount the sensing tube.

*Technical data*

For pipe diameter:	5 mm
Material:	stainless steel
Packaging unit:	10 pieces



**Pipe clamp**

**SEC-PC 5-6 StG**

To mount the sensing tube. With brass stiffener. (delivery unit 10 Pipe clamps and 10 brass stiffener)

*Technical data*

For pipe diameter:	5 mm
Material:	brass
Packaging unit:	10 pieces



**ADW Sensing tube cleaning and maintenance set**

**SEC-ACMS 535**

ADW Sensing tube cleaning and maintenance set.





### SensTube Teflon 6/4mm Ex

**SEC-TU 6-4 PTFE-Ex**

Tube to create the sensor part for Ex applications.  
Without connection and termination parts.  
(price per 100)

#### Technical data

Diameter outside:	6 mm
Diameter inside:	4 mm
Length:	100 m
Explosion group:	IIA
Material:	Teflon



### Grounding Clamp

**SEC-GC 5-6 Ex**

Grounding Clamp with ATEX certification.  
To ground the sensing tube in Ex-zone applications.

#### Technical data

Material:	Copper tin-plated
-----------	-------------------



### External Temperature Sensor for EX-zones

**SEC-ART 535-30Ex 1**

**SEC-ART 535-30Ex 21**

The ART 535 external temperature sensor is to be used in the following cases:

- Applications compliant with EN 54-22, Class CI to GI
- Always (for all response grades), as soon as the application temperature in the monitored area deviates more than 20°C from the temperature of the evaluation unit.

#### Technical data

Diameter of sensor:	6 mm
Operating temperature	-50°C to +400°C
Cable length:	30 m
Protection type:	IP65
ATEX Approval:	
ART 535-30Ex 1:	Zone 1, 2 (II 2G Ex em T6)
ART 535-30Ex 21:	
Zone 21, 22 (II 2D Ex mbD A21 IP65 80°C)	
Material:	stainless steel

## SPARE PARTS



### Main Board for ADW 535

**SEC-LMB 35**

Repair exchange for the SEC-ADW 535-1 and -2

#### Technical data

Operating Voltage:	3.3 to 6 VDC
Dimensions (HxWxD):	148 x 120 x 15 mm
Weight:	85 g



### Extension Board for ADW 535

**SEC-LEB 35**

Repair exchange for the second Sensor tube of SEC-ADW 535-2

#### Technical data

Dimensions (HxWxD):	75 x 54 x 35 mm
Weight:	39 g



### Supervising Unit for ADW 535

**SEC-LSU 35**

The LSU 35 consists of a fully electronic differential pressure sensor, a pressure pump and a step motor.



### SD-Card Industrial 2GB

**SEC-SD-Industrial**

SD memory card (industrial) 2GB for on-board (SEC-LMB 35) use in SEC-ADW 535.



### Lithium battery

**SEC-BR2032**

Replacement battery for SEC-LMB 35



### M20 Cable Screw Union

**SEC-M20 VE10**

Cable screw union for SEC-ASD 531/532/535

#### Technical data

Packaging unit:	10 pieces
-----------------	-----------



### M25 Cable Screw Union

**SEC-M25 VE10**

Cable screw union for SEC-ASD 531/532/535

#### Technical data

Packaging unit:	10 pieces
-----------------	-----------

## **Sydney**

Block Y, Unit 1, 391 Park Road, REGENTS PARK NSW 2143  
Mail: PO Box 508 GYMEA NSW 2227  
Phone: 1300 INCITE (1300 462 483) | 02 9644 7144  
Fax: 02 9644 7255  
Email: [sales@incitefire.com.au](mailto:sales@incitefire.com.au)  
Technical support: [support@incitefire.com.au](mailto:support@incitefire.com.au)

## **Melbourne**

Address: Unit 120, 45 Gilby Road, MT WAVERLEY VIC 3149  
Phone: 03 9544 2211  
Fax: 03 9544 2212  
Email: [salesvic@incitefire.com.au](mailto:salesvic@incitefire.com.au)

## **Brisbane**

Address: 25 Jeays Street, BOWEN HILLS QLD 4006  
Phone: 07 3252 5366  
Fax: 07 3252 4099  
Email: [salesqld@incitefire.com.au](mailto:salesqld@incitefire.com.au)

## **Perth**

Address: Unit 2, 48 Irvine Drive, MALAGA WA 6090  
Phone: 08 9349 2972  
Email: [saleswa@incitefire.com.au](mailto:saleswa@incitefire.com.au)